



# COLORSOURCE

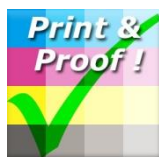
27 rue Pierre Brosolette  
 91430 IGNY France  
 Phone.: +331 69 41 01 62  
 Fax: +339 55 27 98 48  
 Email: support@color-source.net  
<http://www.color-source.net/en/index.htm>  
<http://www.ISO12647Solution.com>

## CxF3\_to\_CGATS utility user's guide

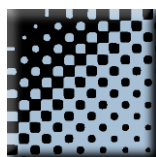
- I) The interest of free CxF3\_to\_CGATS application: ..... 2
- II) Windows software you should install for best use of CxF3\_to\_CGATS application:..... 2
  - 1) Colorsource software: ..... 2
  - 2) Applications that allow you accessing the up to date CxFv3 PANTONE libraries:..... 3
  - 3) Other useful and interesting applications: ..... 4
- II) How and where to find your CxFv3 format PANTONE digital libraries: ..... 4
  - 1) Using your Pantone Color Manager application: ..... 4
  - 2) Using X-Rite Ink Formulation CxFv3 PANTONE libraries:..... 4
  - 3) List of CxFv3 X-Rite and PANTONE libraries on 15/10/2014: ..... 5
  - Pantone Color Manager Libraries (Once exported to i1Profiler SpotColors folder): ..... 5
  - Ink Formulation libraries:..... 5
- IV) Using CxF3\_to\_CGATS free utility:..... 6
- IV) Using your CGATS format libraries: ..... 7
  - 1) Using your CGATS libraries with Colorsource SPOT\_Color\_Manager v1.5 +: ..... 7
  - 2) Using your CGATS libraries with MeasureTool:..... 8
- Troubleshooting and FAQs:..... 10

**Intellectual property:** Please note that for using the spectral PANTONE libraries that **CxF3\_to\_CGATS** application extracts from **Pantone Color Manager**, you have to own a **Pantone Color Manager** Software license. Connecting your **Eye-One Pro 1 or 2** spectrophotometer on your PC allows you activating your **Pantone Color Manager** license, so that generally you will not need buying a **Pantone Color Manager** license if you are equipped with one Eye-One Pro or 2 instruments sold under original X-Rite brand.

CMYK\_Print\_&\_Proof



PLATE



CMYK\_100%



CMYK\_Gravure



SPOT\_Color\_Manager



SPOT\_Gravure





# COLORSOURCE

## I) The interest of free CxF3\_to\_CGATS application:

Our free **CxF3\_to\_CGATS** utility allows you **converting CxFv3 format digital libraries** of named tints (e.g. PANTONE modern digital libraries, or other spot colors libraries such as HKS with. cxf extension) **into CGATS format digital libraries**.

The big advantage of **CGATS** text format is to be lighter and easier to use with a large number of software applications, including the best available Color Management applications, which often have been on the market since many years, long before **CxFv3** format came.

For example, your **CGATS** format digital spot colors libraries can be used with ProfileMaker **MeasureTool** software module, and be recorded in the older **CxFv1.0** format, which is compatible with the excellent **i1Share freeware**, and the excellent **ColorPicker** ProfileMaker software module.

Moreover, **Colorsource SPOT\_Color\_Manager v1.5+ application** can open all your CGATS format tint libraries, including your up-to-date PANTONE libraries, once you have converted them from CxF v3 to CGATS format.

## II) Windows software you should install for best use of CxF3\_to\_CGATS application:

### 1) Colorsource software:

1-1) Free **CxF3\_to\_CGATS** application: In web page [http://www.iso12647solution.com/Downloads\\_and\\_links.htm](http://www.iso12647solution.com/Downloads_and_links.htm).

Or with direct link: [http://www.color-source.net/INSTALLEURS\\_US/CxF3\\_to\\_CGATS\\_Spectral\\_Data.zip](http://www.color-source.net/INSTALLEURS_US/CxF3_to_CGATS_Spectral_Data.zip)

1-2) **If you are a Print House: Colorsource SPOT\_Color\_Manager application for special inks color quality control at reception (i.e. BEFORE you install them on a press!).** You will find a demo version of this application and its user's guide on same public **Colorsource** software download page, or at direct link:

[http://www.color-source.net/INSTALLEURS\\_US/CHECKING\\_SPECIAL\\_INKS\\_PRINT\\_DENSITIES\\_AND\\_FORMULATION.zip](http://www.color-source.net/INSTALLEURS_US/CHECKING_SPECIAL_INKS_PRINT_DENSITIES_AND_FORMULATION.zip)

1-3) You can download as well the general **Colorsource** software installation guide:



[http://www.iso12647solution.com/Applications\\_downloads/Software\\_installation\\_and\\_brief\\_description\\_Guide.pdf](http://www.iso12647solution.com/Applications_downloads/Software_installation_and_brief_description_Guide.pdf)

## 2) Applications that allow you accessing the up to date CxFv3 PANTONE libraries:

**2-1) Pantone Color Manager** application: Download it from **PANTONE** Website. It works as a demo version for 30 days. Connecting an i1Pro or i1Pro2 to your PC generally activates your **Pantone Color Manager** license:

<http://www.xrite.com/service-support/downloads/P/PANTONE-COLOR-MANAGER>

**2-2) i1Profiler** application: Download it on X-Rite website. This application receives the web updated CxFv3 PANTONE digital libraries you can export from **Pantone Color Manager** application:

[http://www.xrite.com/service-support/downloads/I/i1Profiler-i1Publish\\_V1\\_6\\_6](http://www.xrite.com/service-support/downloads/I/i1Profiler-i1Publish_V1_6_6)

**2-3) CxFv3** digital libraries of X-Rite IFS (Ink Formulation Software): **ColorGuideSetup20140414.zip**

<http://www.xrite.com/inkformulation-software/support/d1423>



## 3) Other useful and interesting applications:

3-1) **ProfileMaker** is to be downloaded from **X-Rite** website. Its **MeasureTool** and **ColorPicker** modules offer quite interesting features even without a dongle.

Why X-Rite did stop ProfileMaker and replace it by much lower grade products? Big mystery!

[http://www.xrite.com/service-support/downloads/P/ProfileMaker\\_v5\\_0\\_10](http://www.xrite.com/service-support/downloads/P/ProfileMaker_v5_0_10)

3-2) Free **i1Share** application from **X-Rite** website with much better functions than **Pantone Color Manager**:

[http://www.xrite.com/service-support/downloads/I/i1Share\\_v1\\_4](http://www.xrite.com/service-support/downloads/I/i1Share_v1_4)

Please note above applications **all** work perfectly with **all** Windows **OS** versions including Windows 10 64 bits versions, while they often no longer work on Macs. And nothing can replace them on a Mac! So that most Consultants and End Users should at least put a Windows partition on their Macs!

More generally, experience proves that Graphic Arts software applications have a much larger lifespan when using Windows rather than MacOS, which we appreciate at **Colorsource**.

## II) How and where to find your CxFv3 format PANTONE digital libraries:

### 1) Using your Pantone Color Manager application:

Launch **Pantone Color Manager**.

Check on the web its PANTONE libraries are up to date: (PantoneLIVE/Check for updates...)

Choose the first swatch book: (Display/Swatch book/PANTONE/PANTONE+ Solid Coated-V2)

Export this swatch book to **i1Profiler**: (File/Export/X-Rite i1Profiler...)

Then choose the following swatch book: (Ctrl + Shift + Right)

Export this swatch book to **i1Profiler**: (File/Export/X-Rite i1Profiler...)

Etc.

So that you can export ALL your digital PANTONE swatch books from **Pantone Color Manager** to **i1Profiler** application in **CxFv3 format**. You will find all the exported **CxFv3** files in the **i1Profiler** installation folder named **SpotColors**.

This **SpotColors** folder is a Windows hidden folder: For accessing this folder, use the Tools/Folder Options of Windows Explorer (Or go to **Folders Option** in Windows Control Panel). In the Display tab at item "Hidden files and folders", check "Display hidden files, folders and volumes". Ask your computer guy if you are not familiar with Windows, or try clicking on the following supplied Shortcuts to this folder:

**Shortcut to Windows 7 i1Profiler SpotColors folder:** C:\ProgramData\X-Rite\i1Profiler\SpotColors\

**Shortcut to Windows XP i1Profiler SpotColors folder:** C:\Documents and Settings\All Users\Application Data\X-Rite\i1Profiler\SpotColors\

### 2) Using X-Rite Ink Formulation CxFv3 PANTONE libraries:

Launch **ColorGuideSetup20140414.exe** installation in **ColorGuideSetup20140414.zip**.

If you choose the default installation parameters, your PANTONE CxFv3 libraries will be installed in following folder: C:\Program Files (x86)\X-Rite\ColorGuides\



## 3) List of CxFv3 X-Rite and PANTONE libraries on 15/10/2014:

### Pantone Color Manager Libraries (Once exported to i1Profiler SpotColors folder):

PANTONE(R) F+H cotton TCX.cxf  
PANTONE(R) F+H nylon brights TN.cxf  
PANTONE(R) FHI Color Guide.cxf  
PANTONE(R) Goe(TM) coated.cxf  
PANTONE(R) Goe(TM) uncoated.cxf  
PANTONE(R) GoeBridge(TM) coated.cxf  
PANTONE+ CMYK Coated.cxf  
PANTONE+ CMYK Uncoated.cxf  
PANTONE+ Color Bridge Coated-V2.cxf  
PANTONE+ Color Bridge Uncoated-V2.cxf  
PANTONE+ Metallics Coated.cxf  
PANTONE+ Pastels & Neons Coated.cxf  
PANTONE+ Pastels & Neons Uncoated.cxf  
PANTONE+ Premium Metallics Coated.cxf  
PANTONE+ Solid Coated.cxf  
PANTONE+ Solid Coated-V2.cxf (more complete than previous one)  
PANTONE+ Solid Uncoated.cxf  
PANTONE+ Solid Uncoated-V2.cxf (more complete than previous one)

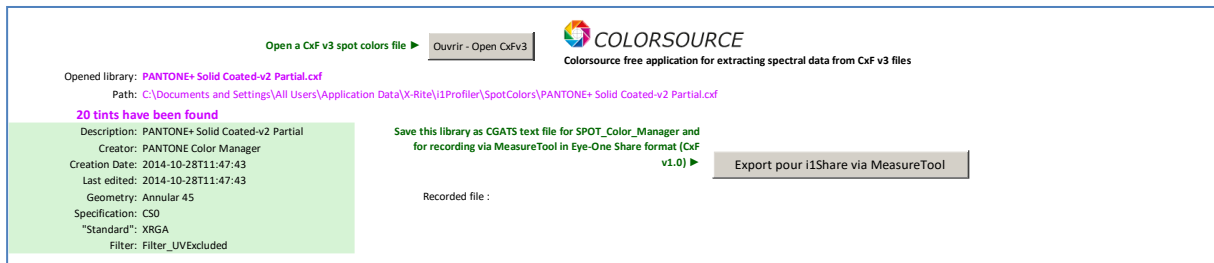
### Ink Formulation libraries:

HKS E (M1).cxf  
HKS E (M3).cxf  
HKS K (M0).cxf  
HKS K (M1).cxf  
HKS K (M3).cxf  
HKS N (M0).cxf  
HKS N (M1).cxf  
HKS N (M3).cxf  
HKS Z (M0).cxf  
HKS Z (M1).cxf  
HKS Z (M3).cxf  
PANTONE GoeGuide Coated (M0).cxf  
PANTONE GoeGuide Coated (M1).cxf  
PANTONE GoeGuide Coated (M2).cxf  
PANTONE GoeGuide Coated (M3).cxf  
PANTONE GoeGuide Uncoated (M0).cxf  
PANTONE GoeGuide Uncoated (M1).cxf  
PANTONE GoeGuide Uncoated (M2).cxf  
PANTONE GoeGuide Uncoated (M3).cxf  
PANTONE Solid Matte (M0).cxf  
PANTONE Solid Matte (M1).cxf  
PANTONE Solid Matte (M2).cxf  
PANTONE Solid Matte (M3).cxf  
PANTONE+ Pastels Coated (M0).cxf  
PANTONE+ Pastels Coated (M1).cxf  
PANTONE+ Pastels Coated (M2).cxf  
PANTONE+ Pastels Coated (M3).cxf  
PANTONE+ Pastels Uncoated (M0).cxf  
PANTONE+ Pastels Uncoated (M1).cxf  
PANTONE+ Pastels Uncoated (M2).cxf  
PANTONE+ Pastels Uncoated (M3).cxf  
PANTONE+ Solid Coated-V2 (M0).cxf  
PANTONE+ Solid Coated-V2 (M1).cxf  
PANTONE+ Solid Coated-V2 (M2).cxf  
PANTONE+ Solid Coated-V2 (M3).cxf  
PANTONE+ Solid Uncoated-V2 (M0).cxf  
PANTONE+ Solid Uncoated-V2 (M1).cxf  
PANTONE+ Solid Uncoated-V2 (M2).cxf  
PANTONE+ Solid Uncoated-V2 (M3).cxf

## IV) Using CxF3\_to\_CGATS free utility:

This **Colorsource** freeware allows you opening any PANTONE (or else) CxFv3 format library and then recording it as a CGATS format library.

### Application main menu:

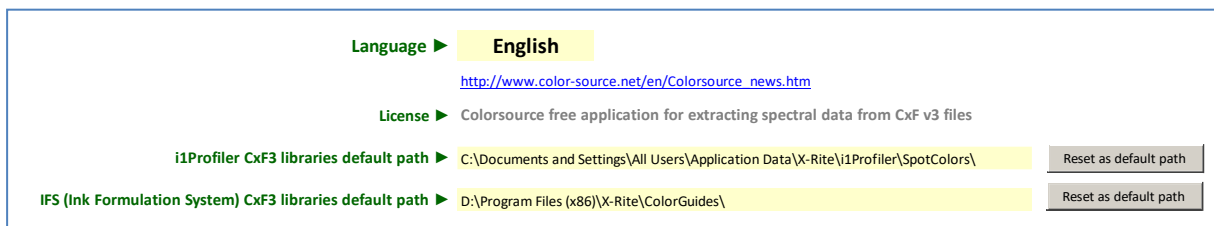


The **Open CxFv3** button allows you navigating in Windows folders to choose a CxF3 digital library.

The **Export** allows you navigating in Windows folders to save the opened library in CGATS file format.

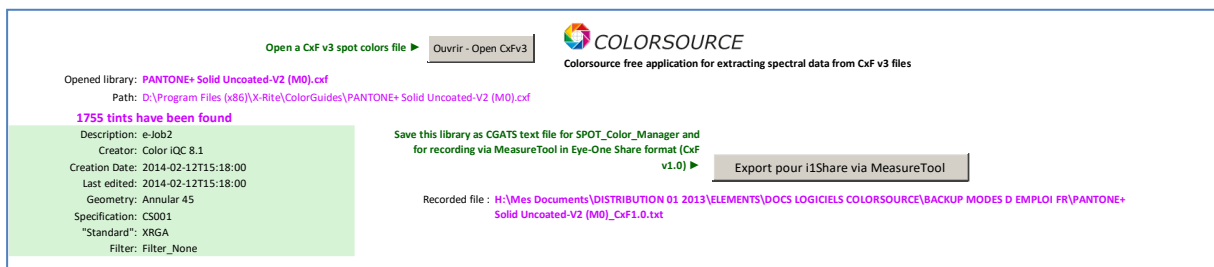
If you save the application (Ctrl S), the two current access paths, for opening your CxFv3 files and for recording your CGATS files, will be saved.

### Application Preferences menu:



You can choose the application language. You can specify here the access paths to **i1Profiler** and **Ink Formulation** applications **CxFv3** libraries, and save **CxF3\_to\_CGATS** application (Ctrl S) for recording these paths. This allows you restoring at any moment the right access path to your CxFv3 libraries.

Hereafter is the main menu, after opening the IFS **PANTONE+ Solid Uncoated-V2 (M0).cxf** library and exporting it to CGATS format:



The exported CGATS library default name is: **PANTONE+ Solid Uncoated-V2 (M0)\_CxF1.0.txt**

## IV) Using your CGATS format libraries:

### 1) Using your CGATS libraries with Colorsource SPOT\_Color\_Manager v1.5 +:

The PANTONE+ Solid Uncoated-V2 (M0)\_CxFl.0.txt library can be opened as the library of standard target spectral reflectances when you need controlling your PANTONE uncoated inks at reception:

In the "Optimal" tab, the target color is searched in this standard library and/or in your Custom colors ("Custom\_Lib" tab)

Choose the standard target colors library ► **Ouvrir - Open Standard Lib** 1755 tints have been found

Standard library: **PANTONE+ Solid Uncoated-V2 (M0)\_CxFl.0.txt** Description: e-Job2

Access path: H:\Mes Documents\DISTRIBUTION 01 2013\ELEMENTS\DOCS LOGICIELS COLORSOURCE\BACKUP MODES D EMPLOI FR\PANTONE+ Solid Uncoated-V2 (M0)\_CxFl.0.txt

Creator: **Color IQC 8.1** Geometry: **Annular 45** Filter: **Filter\_None**

Last edited: **2014-02-12T15:18:00** Specification: **CS001** "Standard": **XRGA**

STANDARD COLOR NAME	380	390	400	410	420	430	440	450	460	470	480	490	500	510	520	530	540	550	560	570	580	590	600	610	620	630	640	650	660	670	680	690	700	710	720	730
1. PANTONE Yellow 012 U	0.06	0.057	0.056	0.059	0.062	0.065	0.068	0.072	0.075	0.077	0.083	0.102	0.16	0.318	0.575	0.767	0.844	0.873	0.886	0.896	0.901	0.907	0.911	0.918	0.926	0.932	0.938	0.942	0.946	0.947	0.947	0.949	0.951	0.953	0.954	0.955
2. PANTONE Bright Red U	0.092	0.098	0.096	0.091	0.096	0.095	0.092	0.085	0.074	0.065	0.058	0.055	0.056	0.06	0.063	0.066	0.075	0.087	0.106	0.173	0.34	0.575	0.768	0.868	0.911	0.928	0.938	0.944	0.948	0.949	0.95	0.952	0.954	0.956	0.957	0.959
3. PANTONE Pink U	0.166	0.197	0.244	0.307	0.353	0.35	0.321	0.282	0.244	0.212	0.178	0.148	0.128	0.11	0.096	0.071	0.07	0.075	0.085	0.128	0.226	0.377	0.539	0.665	0.745	0.798	0.83	0.852	0.862	0.861	0.861	0.867	0.874	0.881	0.891	
4. PANTONE Medium Purple U	0.107	0.137	0.172	0.218	0.262	0.288	0.295	0.279	0.249	0.211	0.168	0.122	0.09	0.072	0.061	0.059	0.062	0.065	0.067	0.071	0.08	0.094	0.108	0.107	0.099	0.099	0.117	0.152	0.208	0.277	0.35	0.413	0.454	0.477	0.508	0.557
5. PANTONE Dark Blue U	0.082	0.109	0.146	0.194	0.236	0.272	0.309	0.321	0.302	0.269	0.224	0.171	0.129	0.101	0.079	0.068	0.065	0.062	0.057	0.056	0.058	0.06	0.061	0.062	0.064	0.068	0.072	0.077	0.081	0.082	0.08	0.079	0.078	0.081	0.087	0.096
6. PANTONE Yellow 0131 U	0.206	0.231	0.263	0.322	0.368	0.381	0.389	0.366	0.406	0.434	0.494	0.609	0.752	0.841	0.873	0.883	0.888	0.894	0.897	0.908	0.915	0.919	0.922	0.927	0.934	0.939	0.944	0.948	0.952	0.952	0.953	0.954	0.956	0.959	0.969	0.96
7. PANTONE Red 0331 U	0.256	0.298	0.353	0.464	0.563	0.588	0.587	0.567	0.546	0.522	0.495	0.473	0.449	0.422	0.41	0.418	0.415	0.399	0.401	0.513	0.709	0.849	0.903	0.922	0.934	0.94	0.946	0.95	0.953	0.953	0.954	0.955	0.957	0.959	0.96	0.961
8. PANTONE Magenta 0521 U	0.27	0.325	0.41	0.583	0.762	0.818	0.813	0.774	0.731	0.69	0.64	0.587	0.545	0.502	0.434	0.372	0.36	0.378	0.378	0.409	0.529	0.696	0.817	0.88	0.912	0.929	0.939	0.944	0.949	0.95	0.95	0.952	0.954	0.956	0.957	0.958
9. PANTONE Violet 0631 U	0.247	0.304	0.387	0.553	0.727	0.798	0.813	0.788	0.748	0.698	0.628	0.536	0.449	0.361	0.321	0.287	0.284	0.29	0.296	0.292	0.331	0.397	0.454	0.461	0.435	0.438	0.502	0.605	0.715	0.796	0.848	0.88	0.897	0.907	0.916	0.926
10. PANTONE Blue 0821 U	0.231	0.295	0.388	0.563	0.745	0.834	0.88	0.891	0.886	0.883	0.875	0.864	0.848	0.824	0.784	0.727	0.656	0.571	0.477	0.403	0.358	0.334	0.315	0.304	0.304	0.309	0.318	0.334	0.355	0.365	0.358	0.344	0.328	0.321	0.333	0.367
11. PANTONE Green 0921 U	0.119	0.139	0.178	0.281	0.417	0.499	0.555	0.605	0.675	0.761	0.821	0.855	0.863	0.855	0.838	0.809	0.771	0.717	0.646	0.571	0.487	0.399	0.32	0.273	0.255	0.25	0.249	0.252	0.267	0.296	0.33	0.362	0.385	0.391	0.381	0.38
12. PANTONE Black 0961 U	0.173	0.197	0.224	0.27	0.306	0.315	0.317	0.314	0.312	0.311	0.311	0.311	0.312	0.313	0.314	0.315	0.317	0.319	0.32	0.323	0.325	0.327	0.329	0.331	0.334	0.337	0.34	0.342	0.345	0.346	0.348	0.35	0.353	0.355	0.357	0.359
13. PANTONE 801 U	0.098	0.126	0.174	0.262	0.367	0.468	0.564	0.625	0.643	0.654	0.657	0.65	0.621	0.561	0.476	0.384	0.3	0.226	0.165	0.127	0.107	0.098	0.091	0.087	0.088	0.09	0.093	0.099	0.107	0.111	0.109	0.105	0.1	0.097	0.104	0.117
14. PANTONE 802 U	0.096	0.101	0.102	0.103	0.097	0.085	0.077	0.073	0.074	0.083	0.115	0.221	0.462	0.748	0.851	0.802	0.734	0.681	0.566	0.468	0.374	0.285	0.211	0.168	0.151	0.146	0.144	0.144	0.154	0.175	0.201	0.225	0.244	0.249	0.241	0.241
15. PANTONE 803 U	0.169	0.163	0.148	0.14	0.123	0.1	0.085	0.078	0.077	0.084	0.116	0.224	0.464	0.734	0.801	0.734	0.733	0.835	0.948	1.029	1.098	1.122	1.089	1.046	1.018	1.004	0.996	0.99	0.985	0.978	0.974	0.972	0.971	0.971	0.97	0.97
16. PANTONE 804 U	0.12	0.109	0.101	0.101	0.1	0.096	0.098	0.107	0.129	0.172	0.237	0.302	0.333	0.32	0.259	0.199	0.203	0.298	0.471	0.705	1.049	1.371	1.429	1.317	1.203	1.14	1.106	1.077	1.05	1.024	1.005	0.994	0.989	0.985	0.981	0.979
17. PANTONE 805 U	0.156	0.156	0.156	0.167	0.175	0.174	0.181	0.196	0.227	0.267	0.284	0.248	0.203	0.169	0.125	0.091	0.09	0.125	0.185	0.282	0.519	0.947	1.324	1.387	1.287	1.2	1.154	1.119	1.085	1.051	1.025	1.008	0.998	0.991	0.986	0.983

### Sample result when controlling an ink sample named "OLD PANTONE 299C":

Densitometric spectral response ? **Status I (recommended)** Visual distance formula ? **ΔE2000**

Standard library: **PANTONE+ Solid Uncoated-V2 (M0)\_CxFl.0.txt**

**TARGET COLOR:** Standard\_Lib ink nearest to measured color : **PANTONE 2202 U**

? Optional prefix Optional suffix ? **L a b Density ?**

**PANTONE AUTO LIBRARY U 62.9 -24.8 -45.6 0.88** at 620 nm

**MEASURED COLOR:** Measured ΔE with target color: **ΔE2000**

Ink: **OLD PANTONE 299 C** **L a b Density ? 60.1 -22.8 -49.7 1.02** at 620 nm **3.8 A**

Paper absolute density ? **2.9 D50**

Associated media: **papier-pg 97.2 0.6 -1.6 0.03** at 620 nm **2.8 F11**

**OPTIMAL DENSITY OF MEASURED COLOR:** Optimal ΔE with target color: **ΔE2000**

Measured color at optimal print density: **L a b Density ? 63.0 -22.8 -46.6 0.91** at 620 nm **1.0 D50**

Ink thickness or concentration necessary adjustment: **87 %** **0.6 F11**

Minimal and maximal authorized densities within tolerance 1 ΔE2000 : **0.90 - 0.91**

Minimal and maximal authorized concentrations or thicknesses within tolerance 1 ΔE2000 (%) : **86 - 87** **1.0 ? Tolerance ΔE2000**

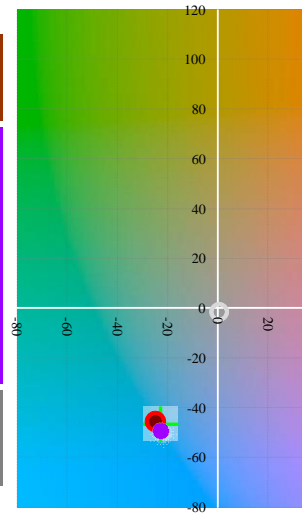
**Tint search:** Standard\_Lib ink nearest to measured color and ΔE **ΔE2000**

**PANTONE 2202 U 62.9 -24.8 -45.6 0.88** at 620 nm **3.8 A**

**2.9 D50**

**2.8 F11**

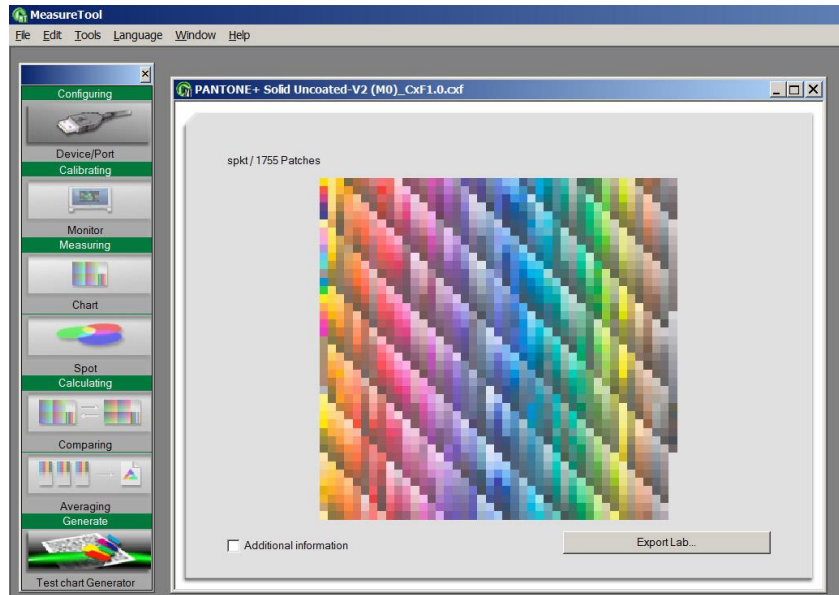
All displayed Lab values are D50 2°. Displayed colors are approximate.





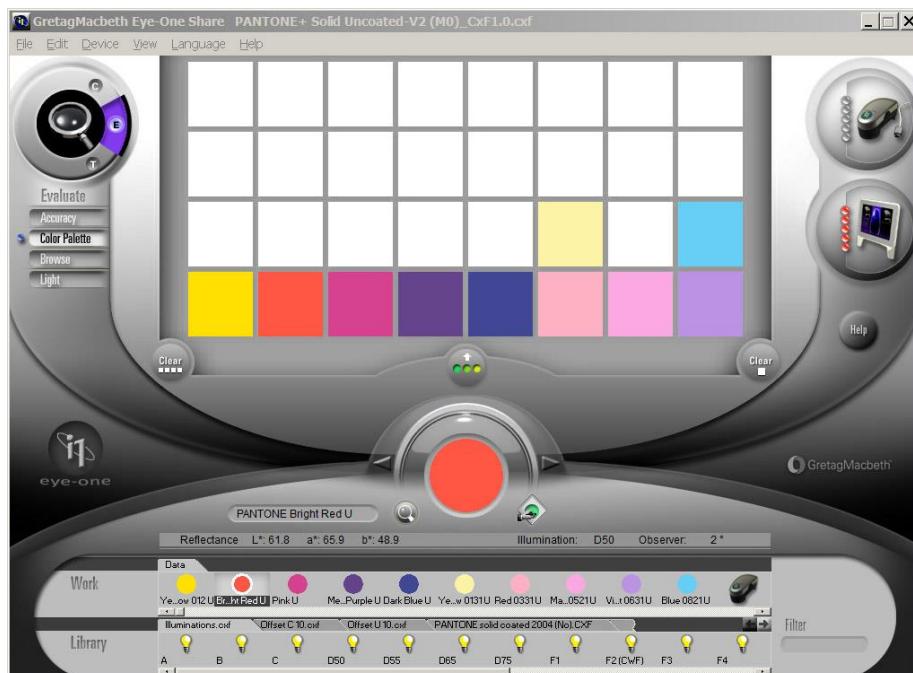
## 2) Using your CGATS libraries with MeasureTool:

The **PANTONE+ Solid Uncoated-V2 (M0)\_CxF1.0.txt** library can be dragged and dropped on **MeasureTool** main window:



Then **MeasureTool** allows you recording this library using the **CxF v1.0** file format that is compatible with the excellent **i1Share** and **ColorPicker** applications: (Make File/Save As... and then choose **Color Exchange Format** file type (.cxf)). This will record a CxF v1.0 file named **PANTONE+ Solid Uncoated-V2 (M0)\_CxF1.0.cxf**.

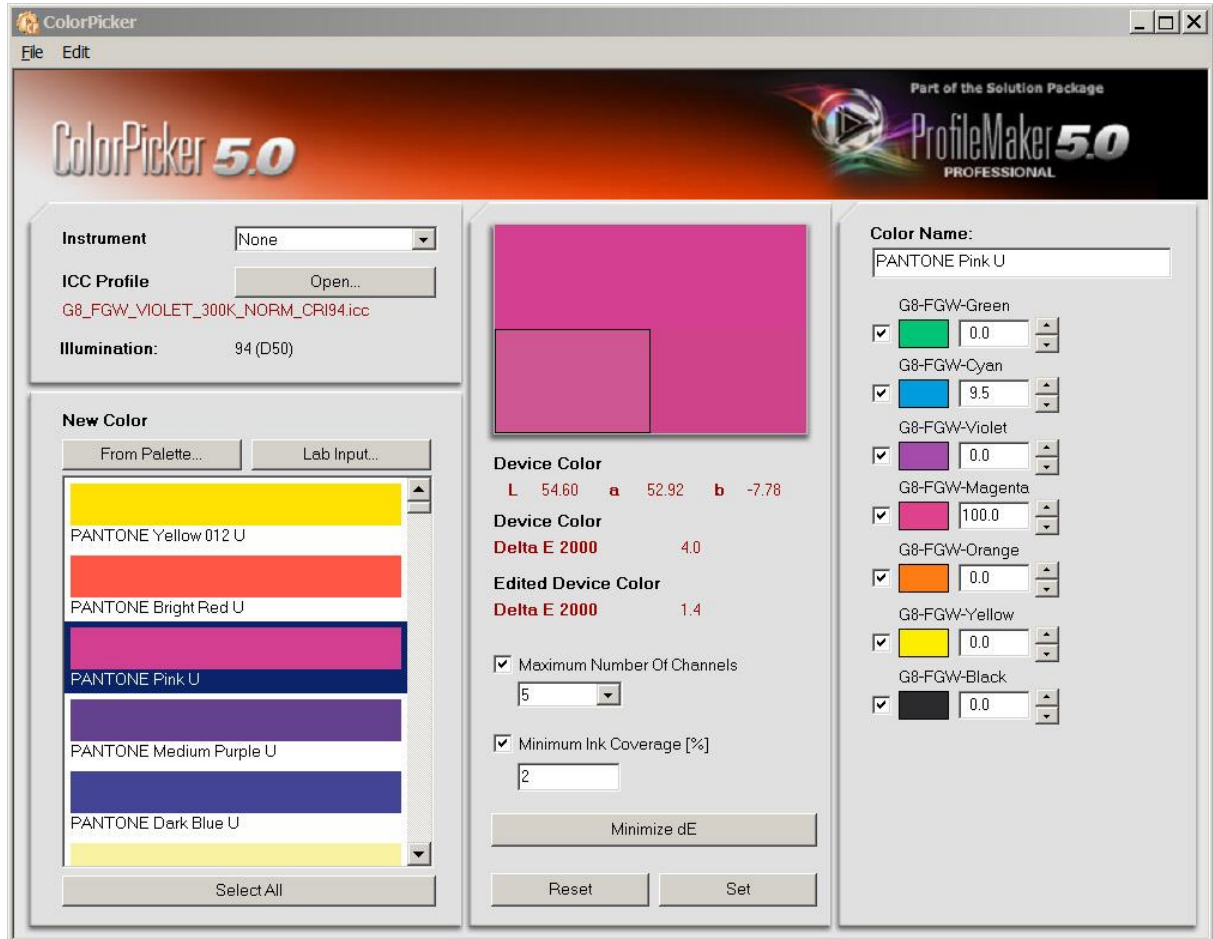
- You can double click on this CxFv1.0 file for opening it with free **i1share** application:



You can as well install this CxF v1.0 library in the appropriate **i1Share** installation folder, in order to replace the older **PANTONE** uncoated libraries dated 2004.



- You can as well drag and drop to ColorPicker tints zone this CxFv1.0 file or the original CGATS text spectral library computed by CxF3\_to\_CGATS application, in order to use the latest PANTONE spectral references with ColorPicker:



**Note:** A same PANTONE reference should never change its spectral reflectance, but some PANTONE references sometimes have kept the same name and changed their spectral reflectance, which has created much confusion in the past.

You can check the PANTONE color changes by comparing your original 2004 CxFv1.0 libraries (That were used by Eye-One Share, ColorPicker, Ink Formulation and SpectroEye) and the up-to-date CxFv3 libraries. Are there differences between Pantone Color Manager and Ink Formulation libraries?

Because PANTONE inks are often formulated using IFS spectral libraries, you should rather use IFS M0 Pantone libraries, for controlling your PANTONE inks with Eye-One Pro 1 or 2, in M0 measurement mode.

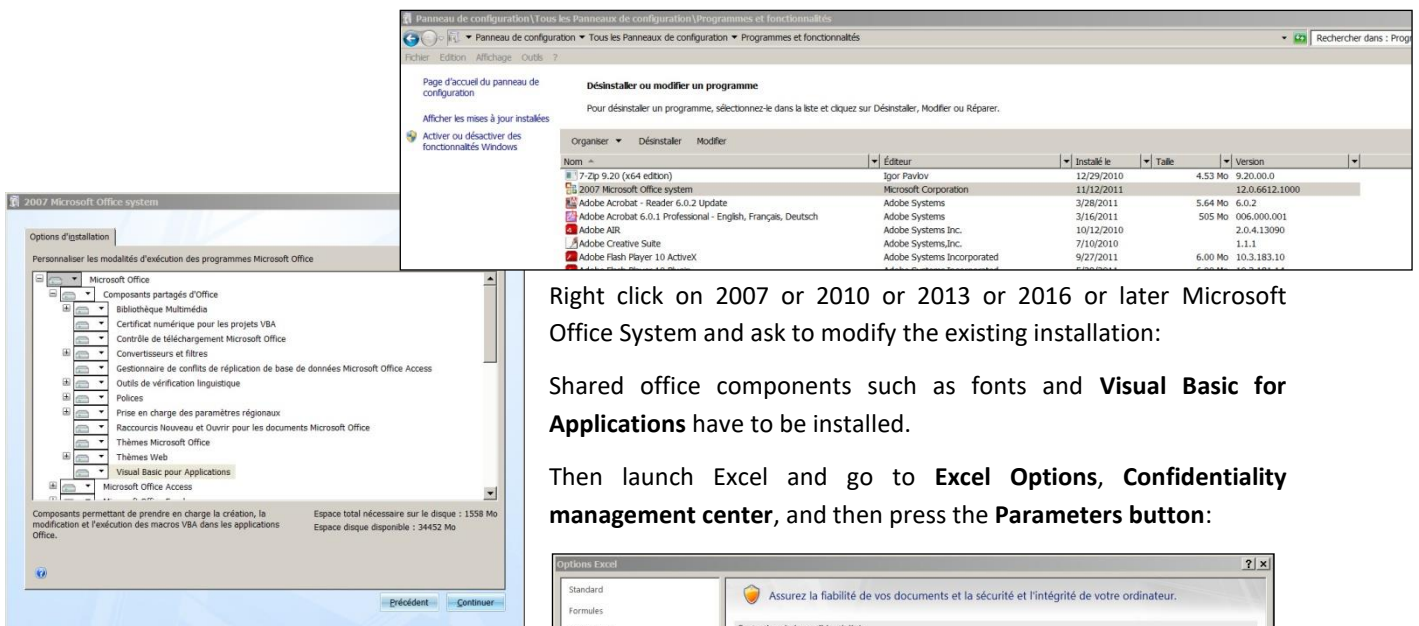
## Troubleshooting and FAQs:

### The application does not launch:

Colorsource applications are using Microsoft Excel for computing engine. Use **Microsoft Excel 2007**, **Excel 2010** or **Excel 2013** or **2016** or later versions.

Please note that Excel (or Microsoft Office) should be installed with appropriate Microsoft Office components including Visual Basic, otherwise the application will not launch.

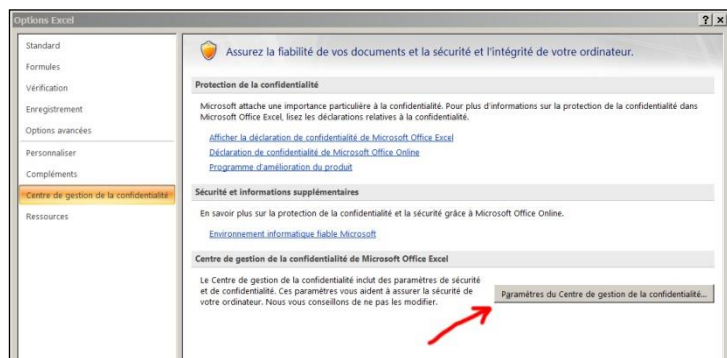
Sometimes optional components of Microsoft Excel (depending on your Excel version and installation kit) MUST be installed. If needed go to Windows Control Panel, in the program's installation menu:



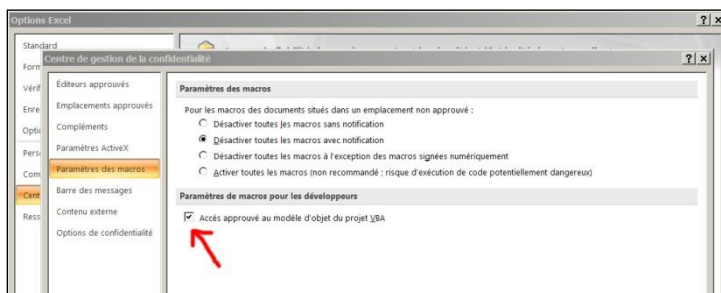
Right click on 2007 or 2010 or 2013 or 2016 or later Microsoft Office System and ask to modify the existing installation:

Shared office components such as fonts and **Visual Basic for Applications** have to be installed.

Then launch Excel and go to **Excel Options, Confidentiality management center**, and then press the **Parameters** button:



**You HAVE TO** approve the access to object model of VBA project:



**Check your Excel version is installed with all most recent Microsoft updates.**

For checking Excel is up to date, go to **Excel/Options/Resources** (Excel 2007), or go to **Excel/File/Help** or to **Excel/File/Account** and then press the « **Search for updates** » button.

Finally, if the application does not launch, disable your antivirus: There are no problems with most of the serious antivirus applications (including Windows native protection systems, free antivirus like Avira, AVG etc.) but some rare antivirus applications may prevent the application launching.



# COLORSOURCE

## Eye-One Share application does not see my Eye-one Pro:

Please see **Eye-One Share** installation procedure for Windows 64 bits versions on **page 11** of Colorsource “**Software installation and brief description guide**”.

## Colorsource software cannot run on my Macintosh:

Yes, it can under Windows XP or Windows 7 or Windows 8.x or Windows 10.

## OK but it cannot run them under MacOS X:

OK when we can find 300 US\$ mobiles Mac as for mobile PCs! Because **Colorsource** applications work very well on low cost PCs and on 10 years-old Win XP PC if needed, so that using expensive Macs would be as uselessly expensive at the time as using the latest iPhone!

**Moreover, many excellent and free color management and applications now only run under Windows operating systems, including some of them that are 20 years old, so that the widest variety of color management applications and utilities experts need are only supported by Windows today. You can always use the results of these apps on your Macs.**

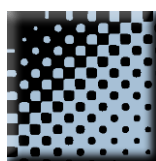
## Any other question or suggestions?

[support@color-source.net](mailto:support@color-source.net)

CMYK\_Print\_&\_Proof



PLATE



CMYK\_100%



CMYK\_Gravure



SPOT\_Color\_Manager



SPOT\_Gravure

